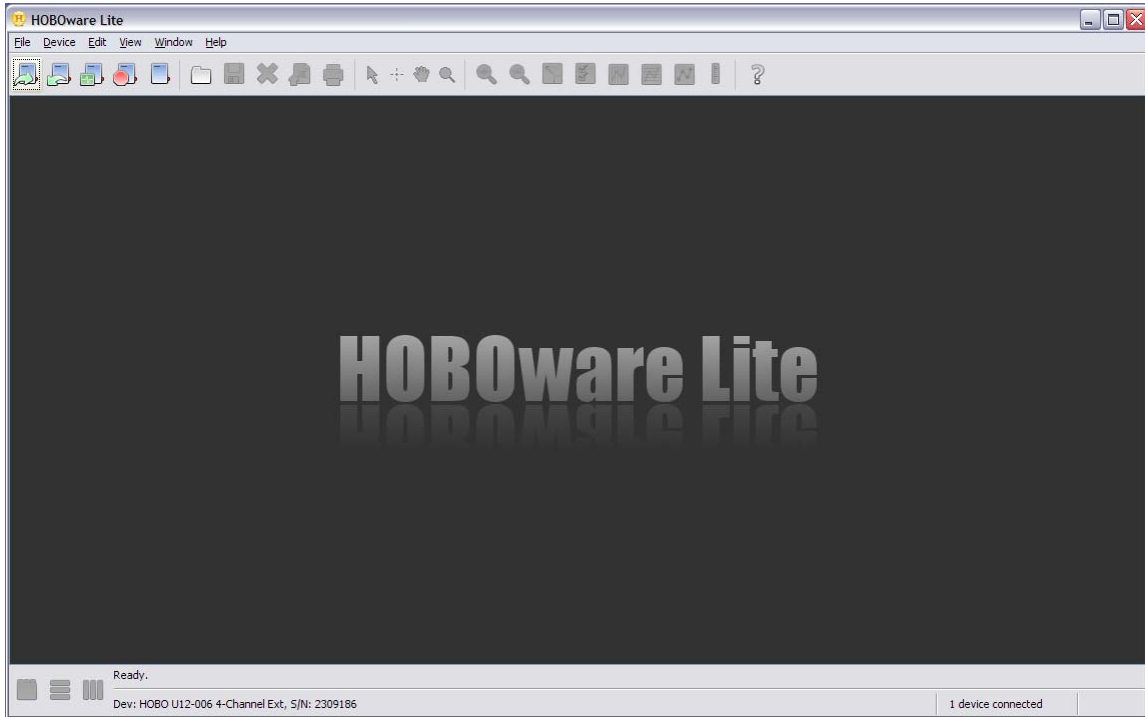


Quick start guide to Launching & Downloading your U12 data logger with probe


To Launch the Logger



1. Open HOBOWare Lite


2. Connect the logger to your PC with the USB cable

The software will find the logger, it will be listed at the bottom of the screen.

3. To launch the logger click on the first icon  on the top tool bar,

(if you hover your mouse over the icon you will see what function each icon performs.)

Launch Logger

Logger Type: HOBO U12-006 4-Channel Ext
 Serial Number: 2309186
 Deployment Number: 2
 Battery Level:  100 %
 Description: 2309186

Channels to Log:

<input checked="" type="checkbox"/> 1)	TMCx-HD (Water/Soil Temperature)	▼
<input type="checkbox"/> 2)	TMCx-HA (Wide-Range Temperature)	▼
<input type="checkbox"/> 3)	TMCx-HA (Wide-Range Temperature)	▼
<input type="checkbox"/> 4)	TMCx-HA (Wide-Range Temperature)	▼
<input type="checkbox"/> 5)	Logger's Battery Voltage	▼

Logging Interval: 0 Hr 10 Min 0 Sec
 Maximum logging interval: 18 Hr 12 Min 15 Sec

Logging Duration: 301 Days, 16 Hr 40 Min 00 Sec
(Approx. time to fill logger)

Launch Options:

Now: ☐ 27/04/09 12:28:11 PM GMT+10:00
 At Interval: ☒ 27/04/09 12:30:00 PM GMT+10:00
 Delayed: ☐ 27/04/09 01:00:00 PM GMT+10:00
 Maximum delay: 194 Days 4 Hr 20 Min 15 Sec
 Trigger: ☐ Push Logger Button for 3 Seconds

Buttons: Help, Cancel, Status..., Launch

In the description you can write your own description e.g. immunization fridge 1.

Select Channel 1 by clicking in the box, then from the drop down menu select the sensor TMCX-HD

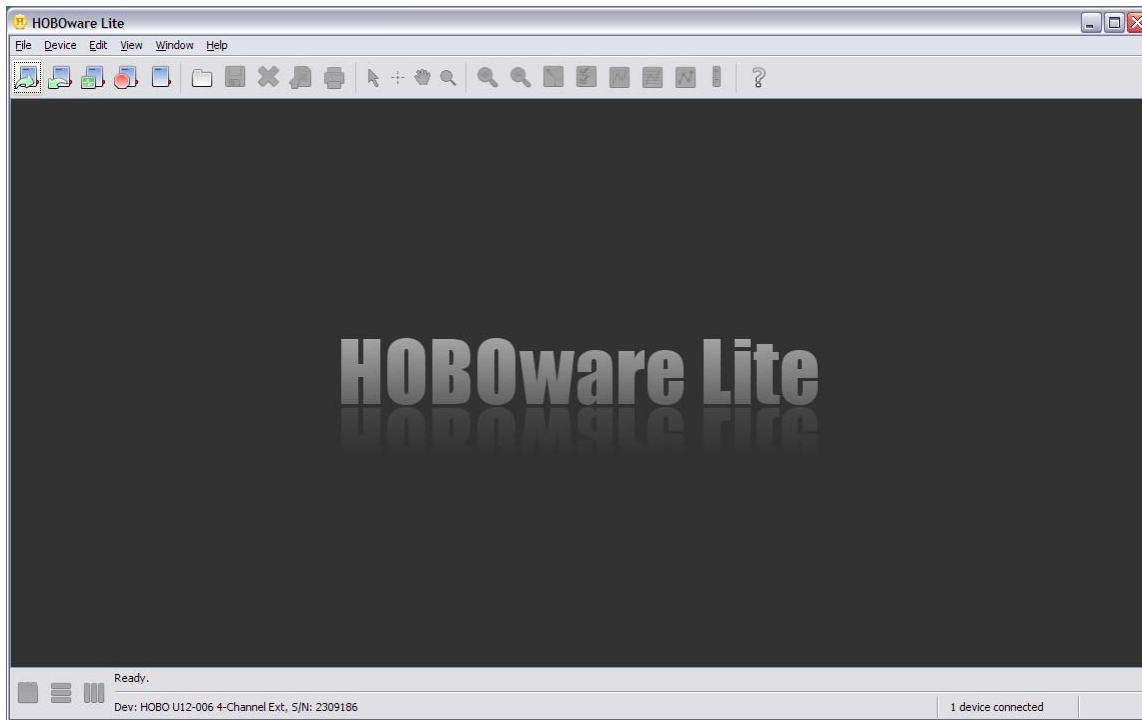
Select the logging interval

We recommend you select launch at interval. This will give you time to plug the logger into the probe attached to your fridge and will give you readings at clear times e.g. 12.30, 12.40, 12.50 Rather than 12.28, 12.38, 12.48 that you would get if you select to launch now.

Then press the Launch button

Now you need to attach the logger to the probe that is attached to your fridge. Be sure you plug it into Channel 1.


To Download the logger

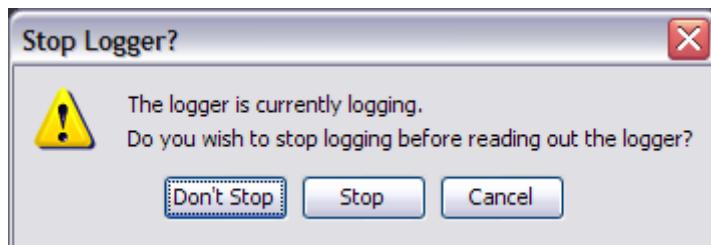


1. Open HOBOWare Lite

2. Connect the logger to your PC with the USB cable

The software will find the logger, it will be listed at the bottom of the screen.

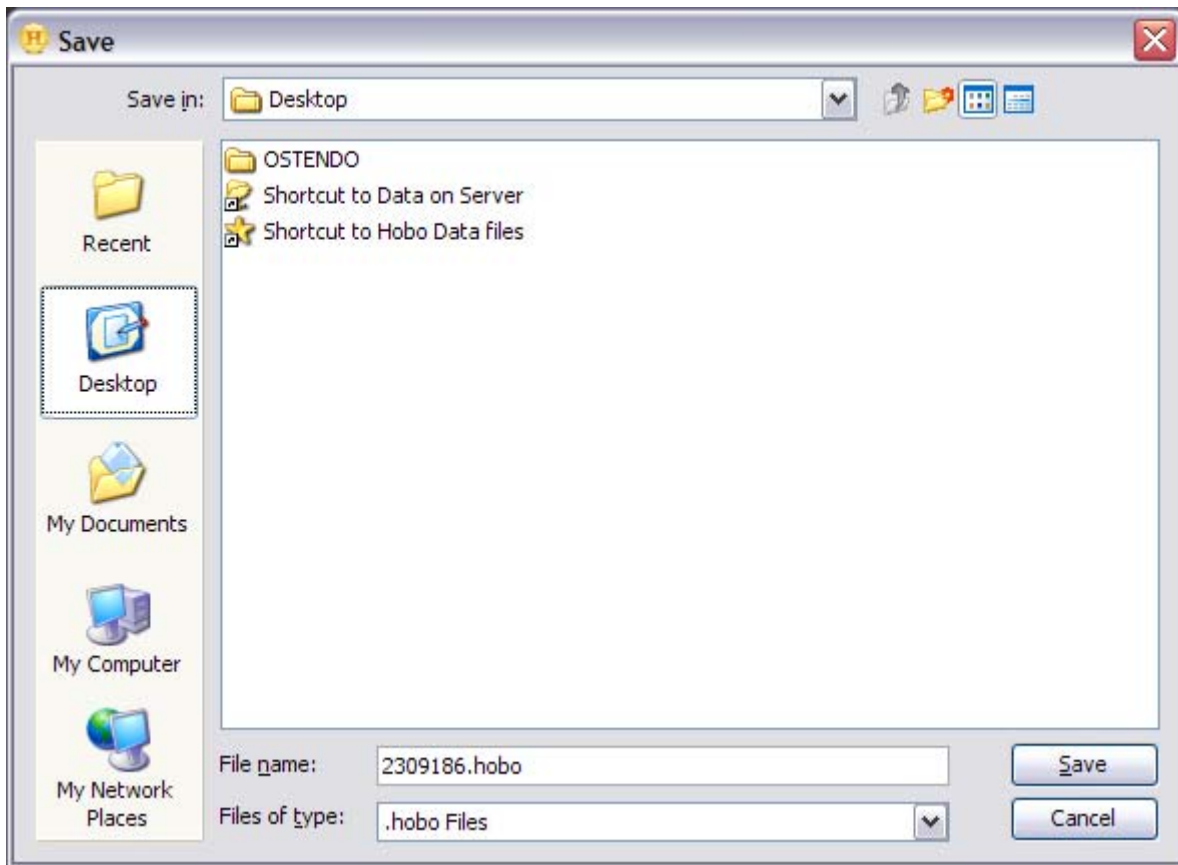
3. To download the logger click on the 2nd  icon on the top tool bar, (if you hover your mouse over the icon you will see what function each icon performs.)



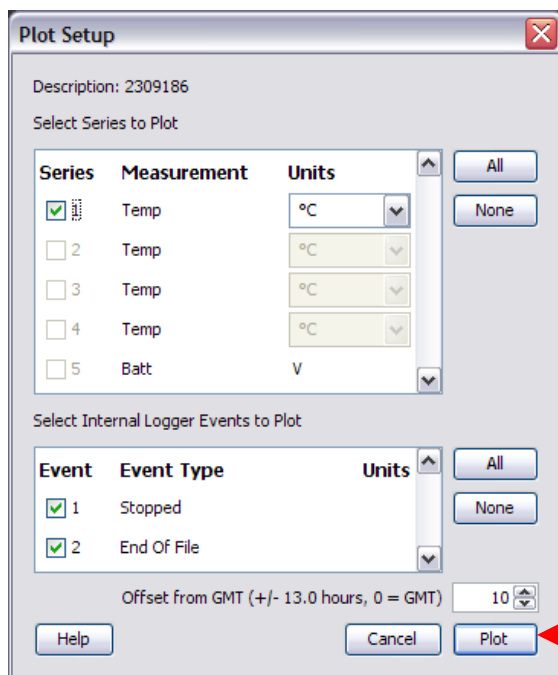
You'll get a message that asks if you want to stop the logger or not, generally you would stop the logger.

The logger will download, then it will ask where you wish to save the data file


Perhaps you may need to ask your IT where you should save these files

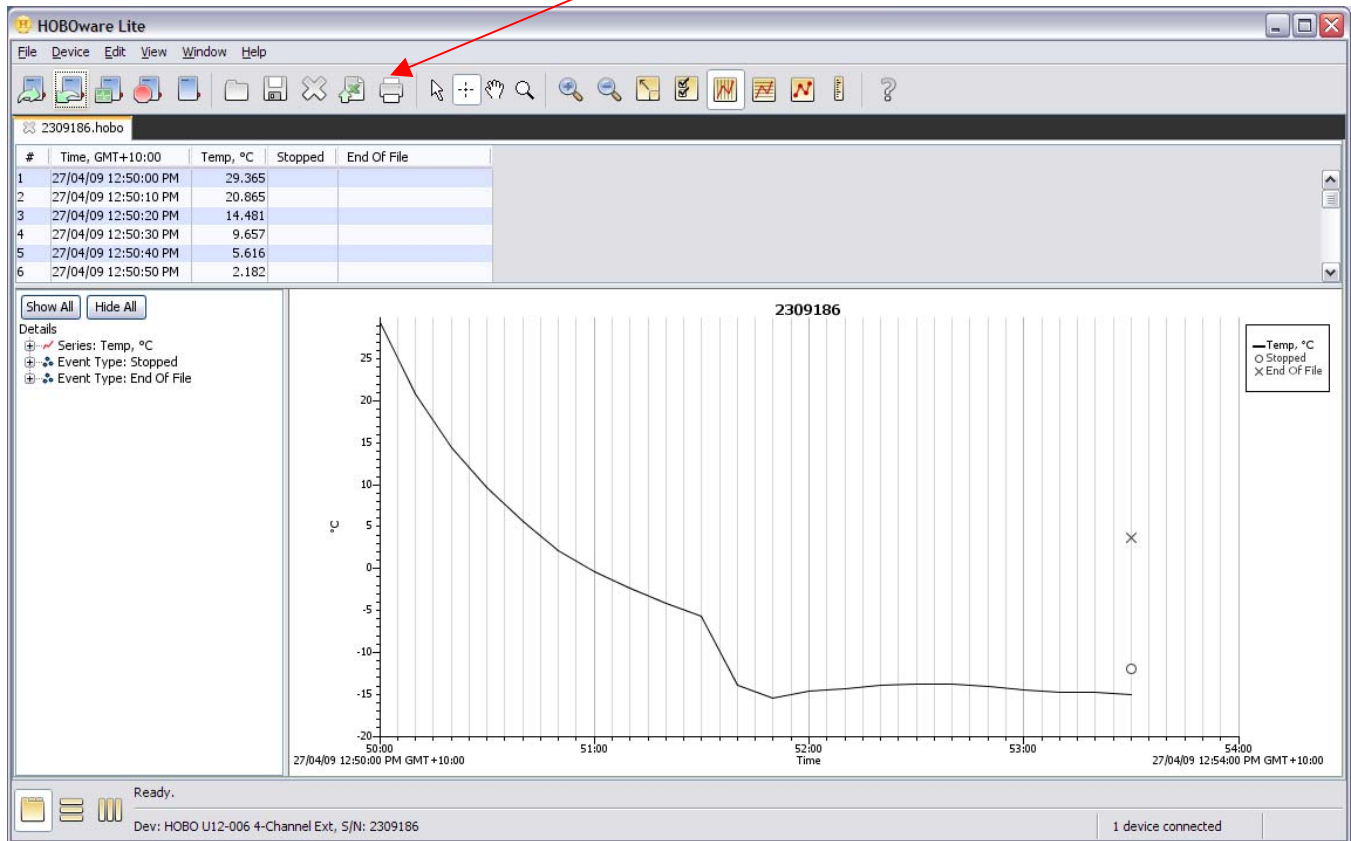


The file name can be altered if you wish here, we recommend you use a format that will list your files in order e.g. the date backwards 20090401 Fridge 1. then press save.



Select Plot to produce the graph.

To print the graph click on the 10th Icon  across on the tool bar



Please refer to the HOBOWare lite Manual for full functionality of the graphing function.

NOW, you will need to launch the logger again following the instructions on page 1 & 2 to continue logging.